



Cottage Grove

Where Pride and Prosperity Meet



Workforce Profile

Workers within a 25 minute commuting range

Cottage Grove’s Southeast metro location allows businesses here to draw from a labor pool of over 471,000 workers—including employees from the heart of the metro area as well as from nearby rural areas.

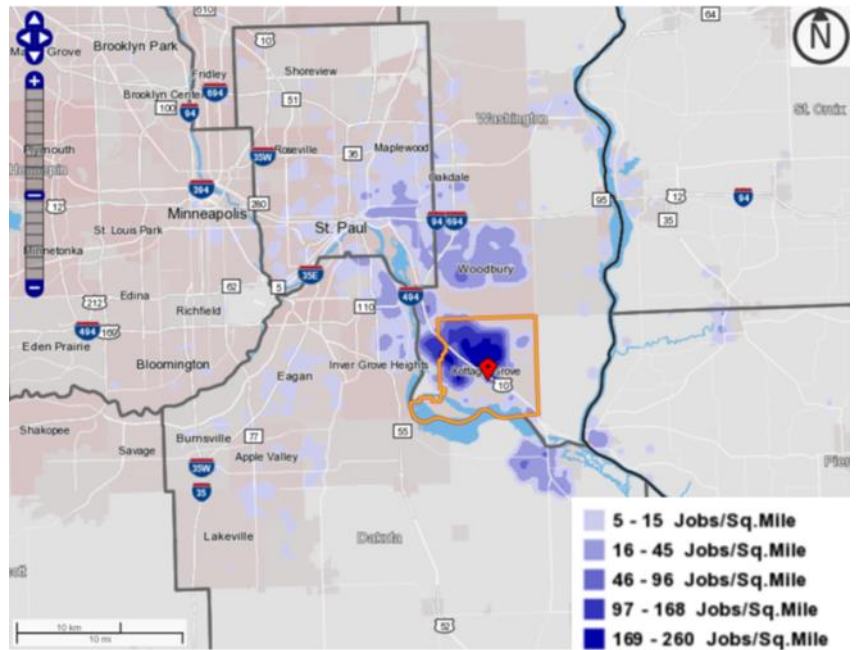
Estimated Labor Force (2015)¹: 471,000
Production Workforce: 26,400
Management/Business/Financial: 77,300
Professional: 117,000

Unemployment Rate¹: 4.5% (Annualized for 2015)

Labor Shed: Where Workers Live in Cottage Grove²

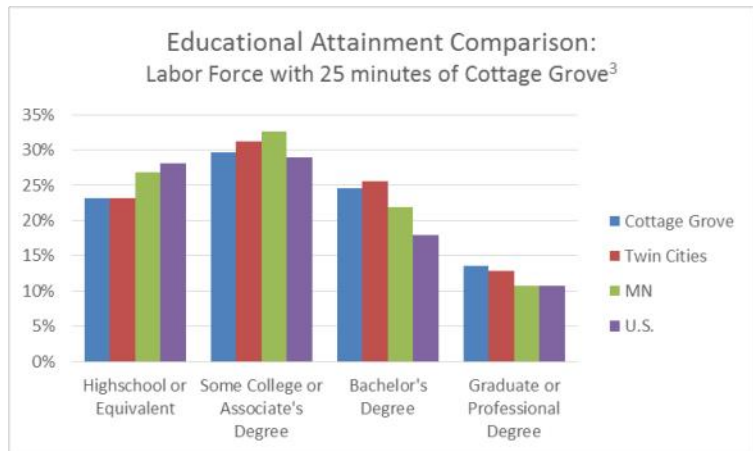
Geographic Diversity

Cottage Grove’s close proximity to the 494, I-94, and 35E—in addition to its lack of traffic congestion—make it easy for workers to commute to Cottage Grove from all around the Twin Cities and outlying areas (see labor shed map, right).



Educated Work Force

Cottage Grove’s labor pool is significantly more educated than state and national averages, with 38.6% of workers having earned a Bachelor’s degree or higher¹.



¹ ESRI Community Analyst, 2016 Accessed via greatermsp.org

² U.S. Census Bureau, Local Employment-Household Dynamics, 2014

³ U.S. Census Bureau, American Community Survey 5-Year Estimates, 2009-2015